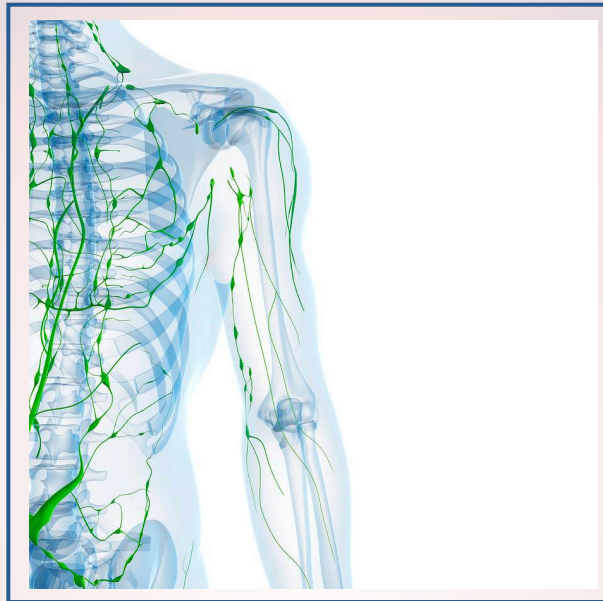


Devine Massage Therapy sponsoring

Chikly Health Institute

# Lymphatic Drainage Therapy 1

SEPTEMBER 7-10, 2017



**Lymphatic Drainage Therapy 1 takes traditional lymph drainage techniques and adds a level of precision. It is the first technique that enables practitioners to detect and palpate the specific rhythm, direction, depth and quality of the lymph flow anywhere in the body.**



Instructor: Arlene Garcia

Location: Ottawa Conference & Event Centre - 200 Coventry Road  
Ottawa, Ontario

Time: 9:00am – 5:30pm/day

Cost: \$795.00 USD (\$595 early registration – 60 days in advance)

Students in Health Program: \$395 USD

To Register, contact The Chikly Health Institute at [www.chiklyinstitute.com](http://www.chiklyinstitute.com) or  
(888) 333-1055 or [CHITrainings@ChiklyInstitute.com](mailto:CHITrainings@ChiklyInstitute.com)

Contact Robin Devine with Devine Massage Therapy for more details at  
(403) 472-3100 or [robin@devinemassagetherapy.com](mailto:robin@devinemassagetherapy.com)